



ALL NEW
RAYSCAN

Getting ready for the Future of Dentistry

01 CBCT

- Superior image processing
- Super high resolution
- Incomparable Free FOV

02 Panoramic

High-definition image quality

03 Cephalometric

One Shot Ceph and other option

04 Object scan

Digital production of dental appliances in combination with RAYDENT Solution

& Rayguard Protection

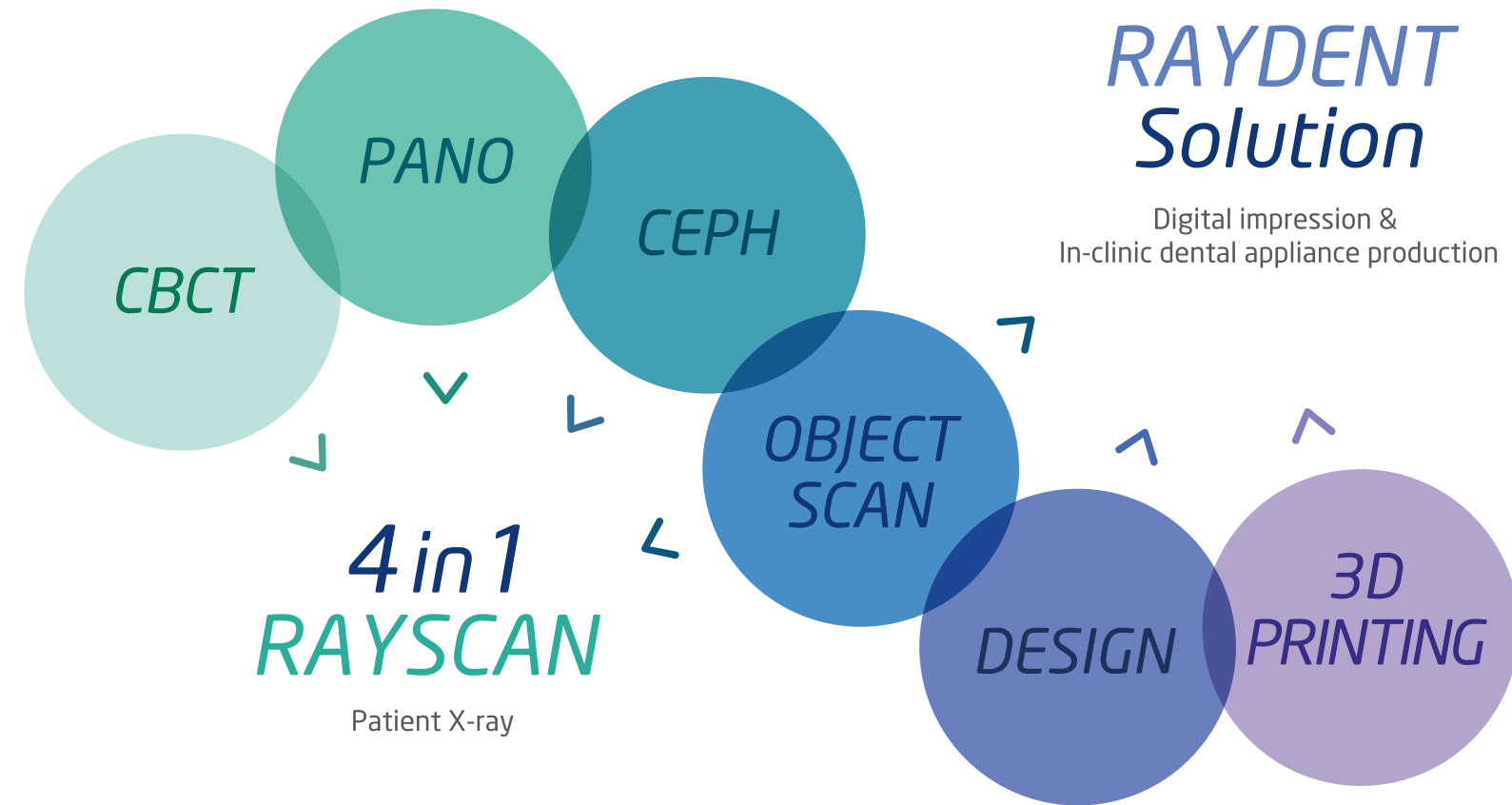
Real-time monitoring of your system to ensure optimal functionality



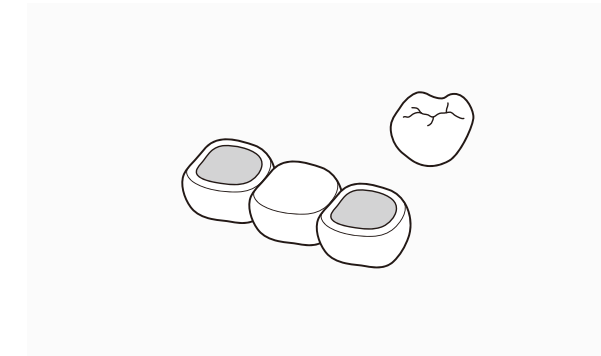
4 in 1
Digital X-ray system

Getting ready for the Future of Dentistry

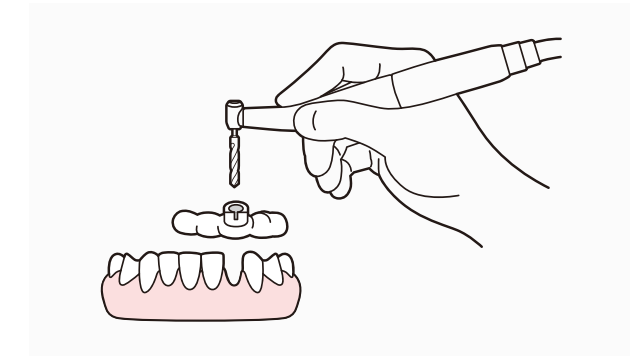
RAYSCAN can be used by itself as 3 in1 digital X-ray(CBCT, PANO, CEPH) or 4 in1 in combination with RAYDENT Solution for in-clinic production of dental appliances. (eg. Temporary crown & bridge, Implant surgical guide, ENDO guide, Tooth aligner, etc)



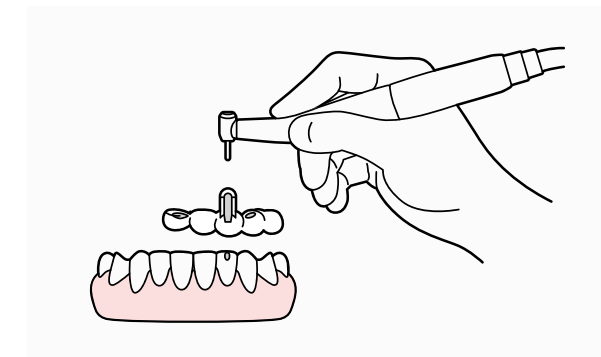
Temporary crown & bridge



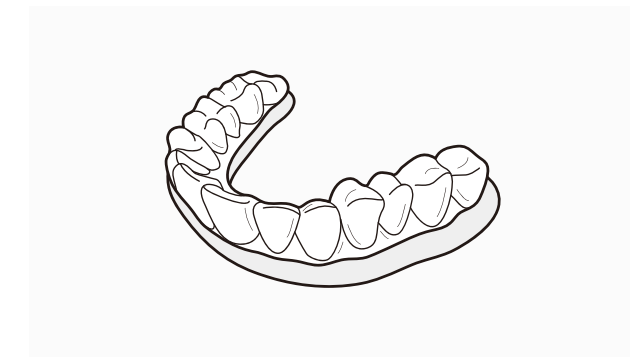
Implant surgical guide



ENDO guide



Tooth aligner



01 CBCT Superior image processing

When you need to scan faster...

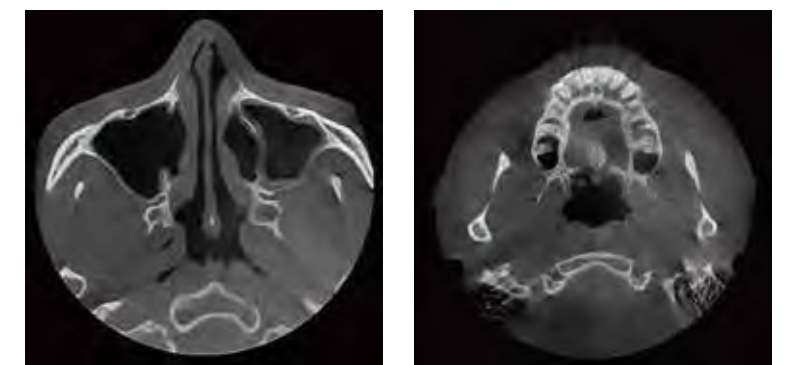
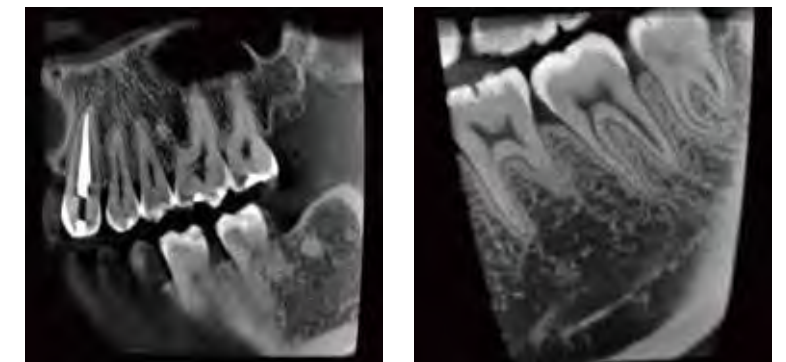
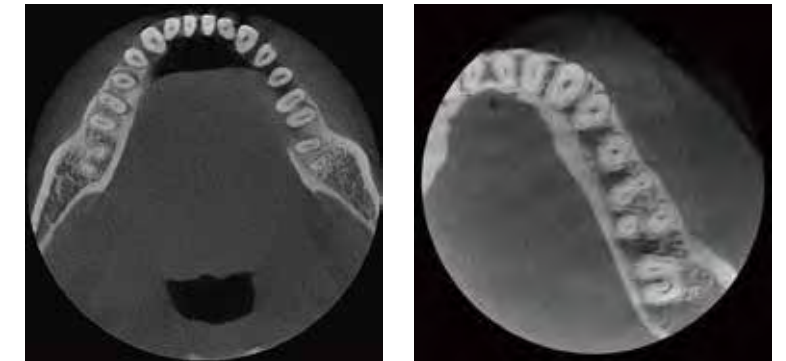
Down to **4.9 second** scan and **4 second** 3D reconstruction !

When you need to see more detail...

Up to **70 μm** with a **focused field of view** !

When you need to see more anatomy...

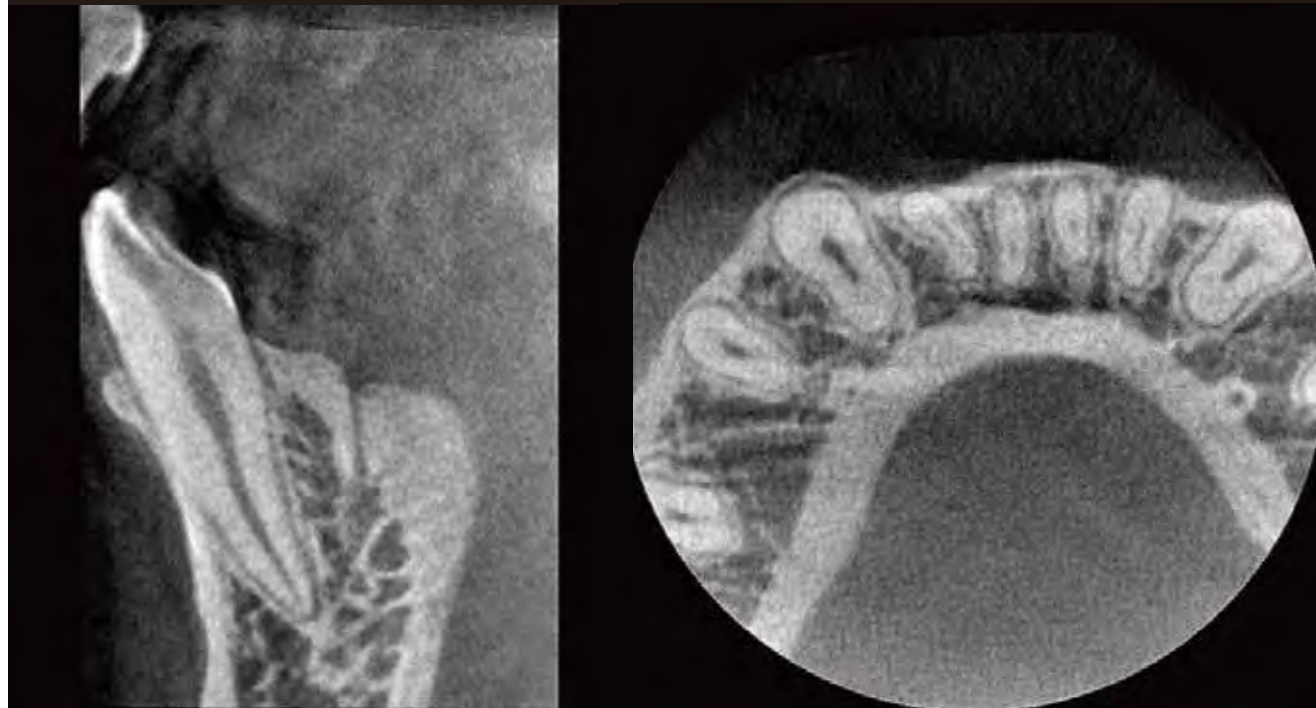
Up to **16 cm** diameter field of view reconstructed in **6 seconds** !



01 CBCT Super high resolution

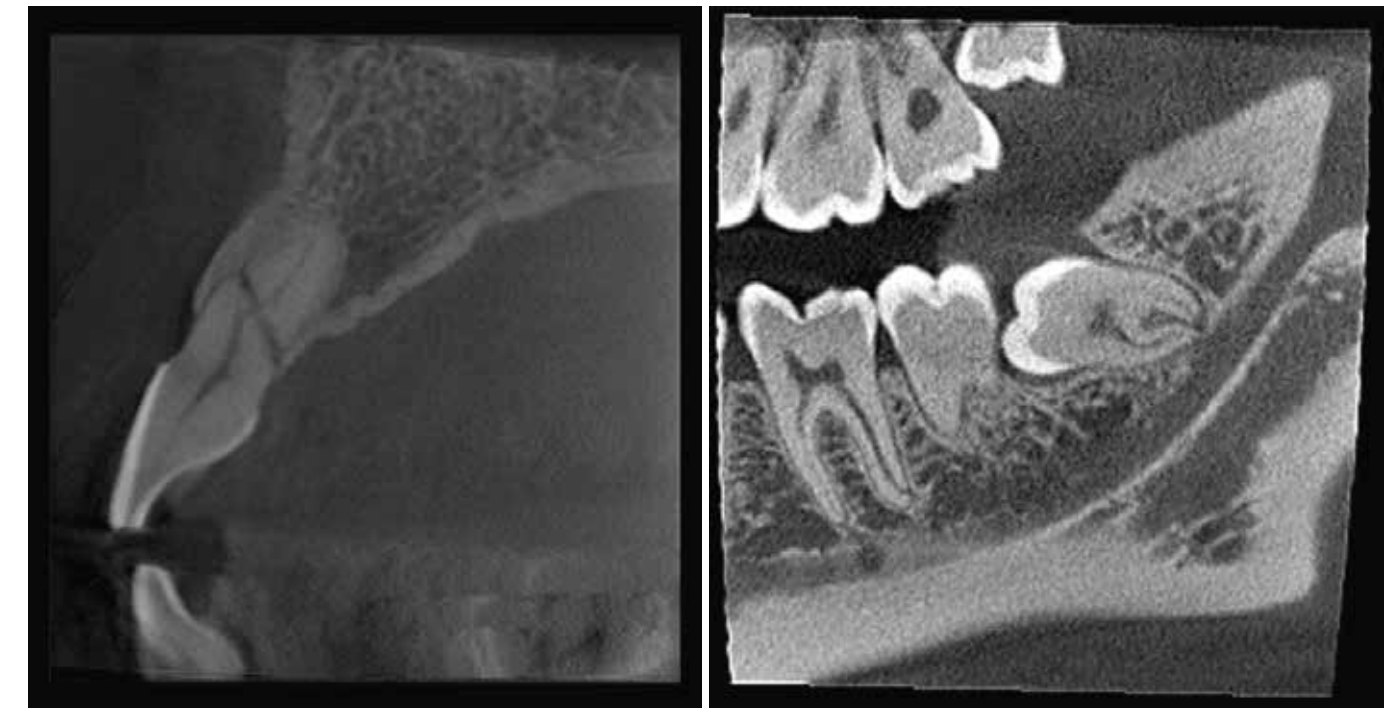
When you need very precise detail...
Up to 70 μ m Scan mode for endodontics!

Highest Resolution Dental CBCT Images



More Detail & Less Time

See more detail using a high-resolution CT image in a specific area.
Do more procedures in less time.



01 CBCT Incomparable Free FOV

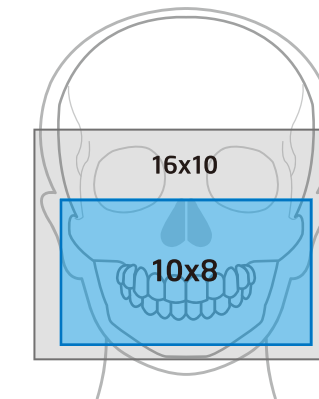
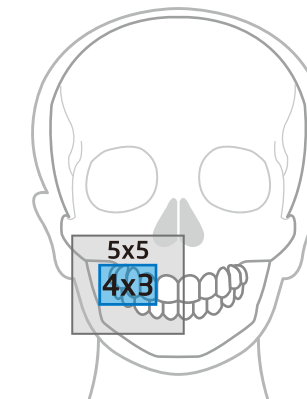


Visible X-ray Guide of RAYSCAN Alpha plus indicates the location of the area to be scanned.

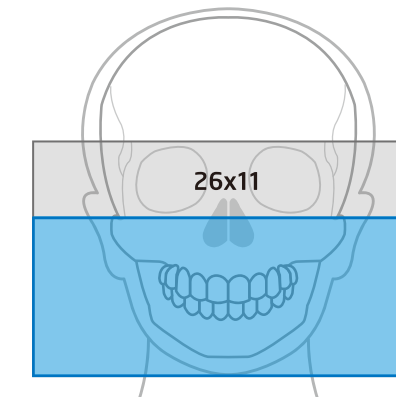
The user can conveniently adjust the FOV according to the purpose of the treatment.

Dose Reduction

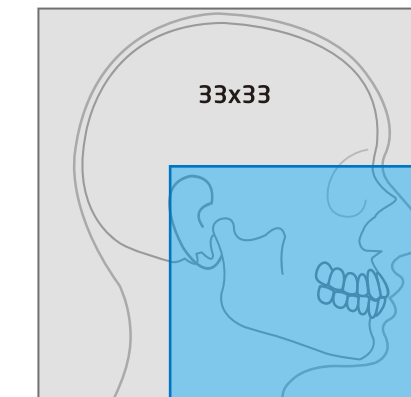
CBCT



Panoramic



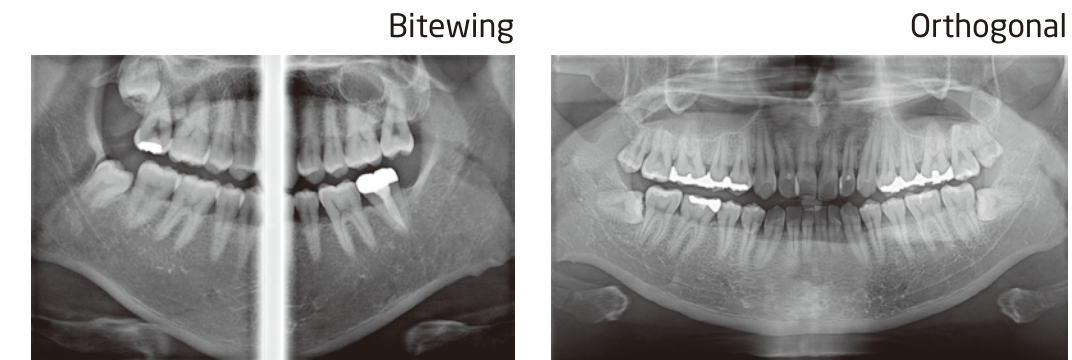
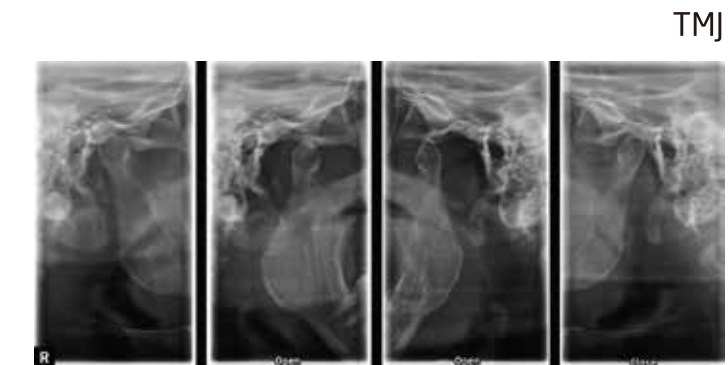
Cephalometric



See where you focus with Light guided free FOV

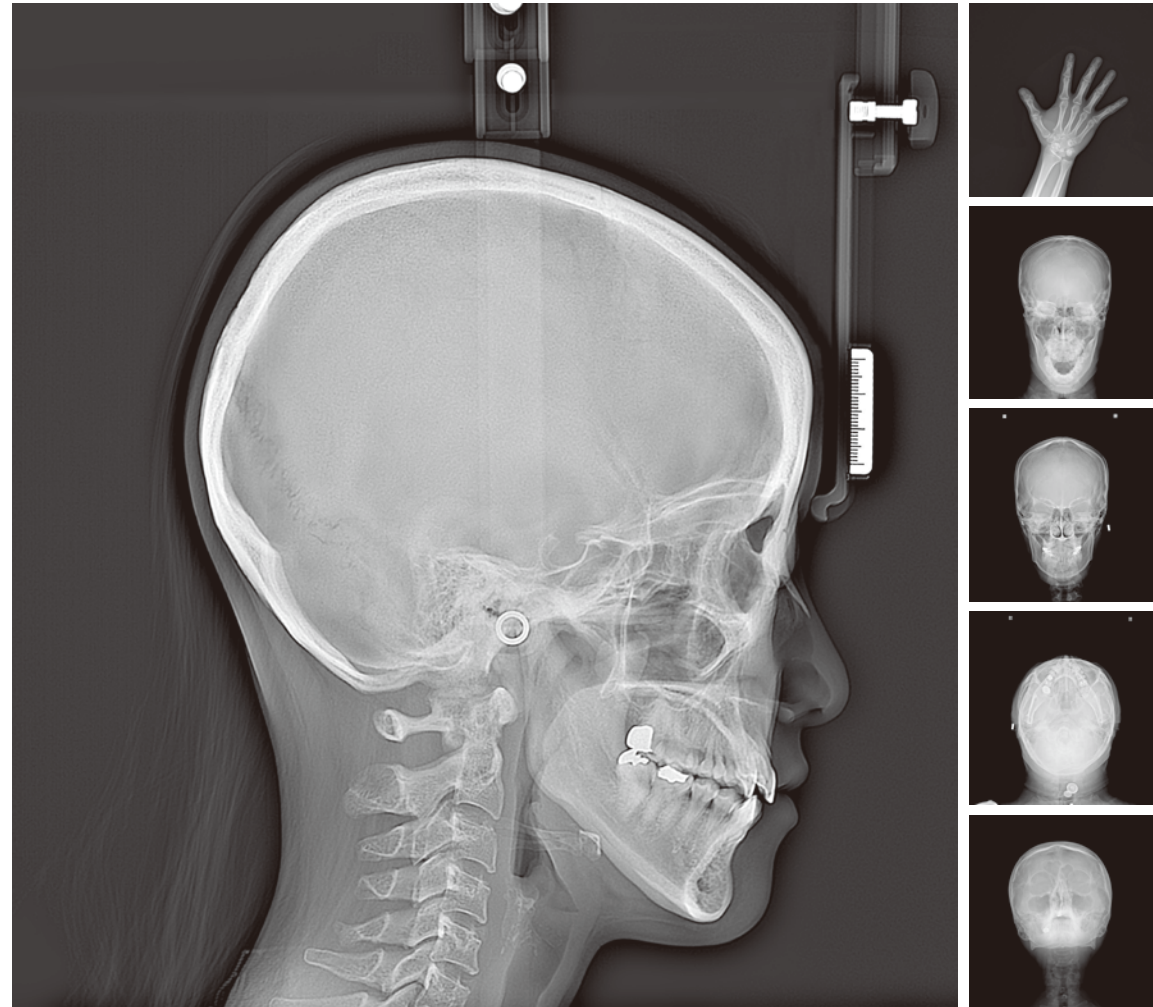
02 Panoramic

The state of the art technology for high-definition image quality.



03 Cephalometric

One Shot Cephalometric Imaging acquires images in less than 1 second to reduce image distortion !



Choose from two sizes of one shot cephalometric sensors. A scanning ceph is also available for a smaller overall unit footprint.

One Shot Cephalometry

Our cutting-edge Flat Panel Detector(FPD) provides a new level of performance and reliability while reducing radiation exposure and image distortion due to patient's movement. Two different sizes of FPD are available.



Standard



Large

Scanning Cephalometry

Our scanning ceph module allows clinicians to upgrade their diagnostic capabilities while keeping costs to a minimum.



04 Object scan in combination with RAYDENT Solution

Object scan is a breakthrough 3D scanning method to acquire 3D data from impressions and plaster models.



RAYSCAN Object scan

1. Scan

CT impression scan

- Digital production of dental appliances in clinic or lab.
- Applications include Crown & bridge, Implant surgical guide, ENDO guide, Tooth aligner, etc.
- On-line design supports.
- Seamless workflow from CT scanning to 3D printing.



RAYDENT designer

2. Design

Simple & easy CAD



RAYDENT Printer

3. 3D Printing

Fast & accurate 3D Printing



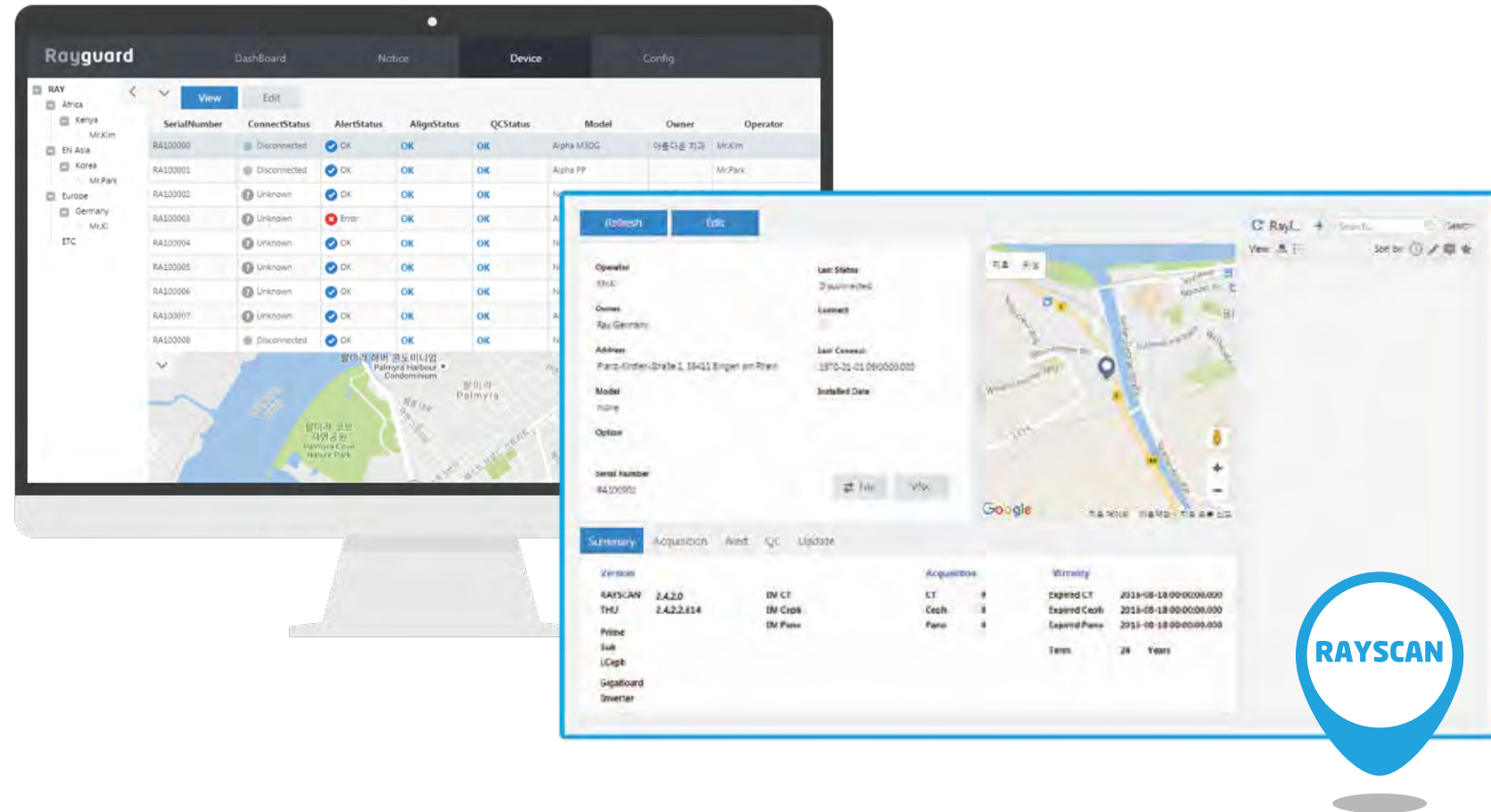
4. Results

Dental appliances

& Rayguard Protection

Real-time monitoring to ensure optimal functionality

Rayguard is a real-time monitoring service to take care of your RAYSCAN 24/7. It provides peace-of-mind by resolving your issues before you even report it. What you get is immediate technical supports.



Specifications of RAYSCAN

	α (P/SC/OCS/OCL)	α (3D/SM3D/M3DS/M3DL)	$\alpha+130$ (RCT700)	$\alpha+160$ (RCT700)
Type	Panoramic, Cephalometric	Cone Beam CT, Panoramic, Cephalometric		
Patient positioning	Standing (Wheelchair accessible)			
Focal spot	0.5			
Tube current	4~17mA			
Tube voltage	60~90kVp			
CBCT				
FOV size	Pano / Ceph only	10X10cm, 9X5cm	Max. 13x10cm	Max. 16x10cm
FOV support		Multi FOV	Free FOV	
Voxel size		100~300 μ m	70~300 μ m	
Scan time		5.8~14sec	4.9~14sec	
Fast scan mode		Yes		
Object scan support	Yes (Option)			
Panoramic				
Image size	Max. 15cm (H)			
Scan time	Max.14sec			
Free FOV support	No			Yes
Cephalometric				
Option type	None, SC, OCL, OCS			
Free FOV support	No			Yes
Cephalometric (Option)				
Type	SC (Scanning Ceph)	OCS (One-shot Ceph Standard)	OCL (One-shot Ceph Large)	
Image size	Max. 26x22.5cm	Max. 30x25cm	Max. 33x33cm	
Scan time	3.8~9.9sec (α) 3.7~19.8sec ($\alpha+$)	0.6 / 0.8sec	0.2 / 0.5sec	

IDEA BRONZE



REDDOT WINNER



GD BEST OF BEST



GD AUSTRALIA



Ray Co., Ltd. 

332-7, Samsung1-ro, Hwaseong-si, Gyeonggi-do, 18380, Korea

Phone +82.31.605.1000

Email ray_overseas@raymedical.co.kr

Web www.raymedical.com

RBS-AP04 (rev.0)

Design and specifications are subject to change without notice